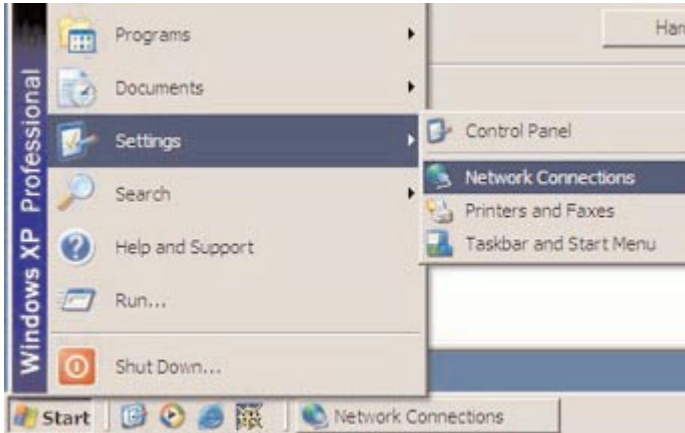


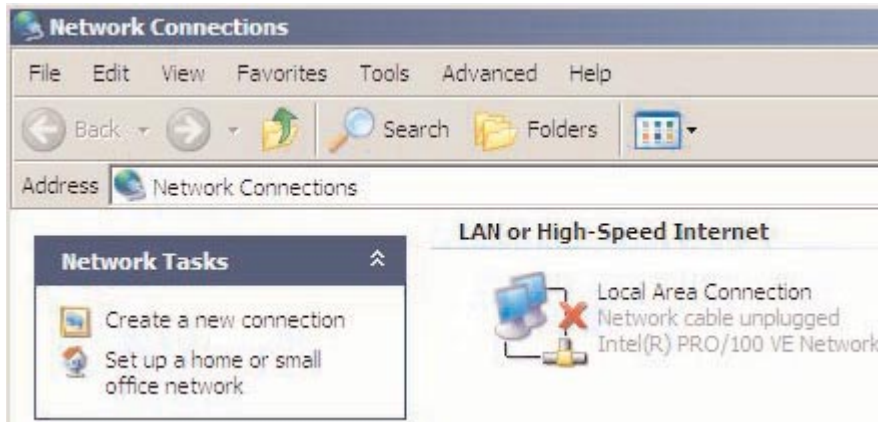
How to Configure your Computer for the Marietta College Dial-Up Windows 2000/XP

The first thing you will need to do is make sure that you have all the appropriate hardware installed in your computer. For this you will need to consult the manual that came with your modem to learn how to install it. Each modem is different, explaining the installation process is outside the scope of this tutorial.

Once your modem is installed or if you already have a modem installed, you will need to plug your modem into a phone jack. Make sure you are connected before beginning this tutorial.



Click on the **Start Button**, then go to **Settings**, then **Network Connections**.



Once you have opened the Network Connections window you will need to click on the **Create a new connection** button

This will open the New Connect Wizard, continue to page 2

You will be presented with the following Screens, simply click **Next** to continue



Click **Connect to network at my workplace**, Then click **Next**



Click **Dial-up Connection**, Then click **Next**



Name your connection **McNet**,
Click **Next**



New Connection Wizard

Connection Name
Specify a name for this connection to your workplace.

Type a name for this connection in the following box.

Company Name
McNet

For example, you could type the name of your workplace or the name of a server you will connect to.

< Back Next > Cancel

For **On Campus** dialup the phone number is **7492**

For **Off Campus** dialup the phone number is **376-7492**

Click **Next**



New Connection Wizard

Phone Number to Dial
What is the phone number you will use to make this connection?

Type the phone number below.

Phone number:
7492

You might need to include a "1" or the area code, or both. If you are not sure you need the extra numbers, dial the phone number on your telephone. If you hear a modem sound, the number dialed is correct.

< Back Next > Cancel

From here you will have the option to add a shortcut to your desktop if you wish to do this click on the check box, then click **finish**



New Connection Wizard

Completing the New Connection Wizard

You have successfully completed the steps needed to create the following connection:

McNet
• Share with all users of this computer

The connection will be saved in the Network Connections folder.

Add a shortcut to this connection to my desktop

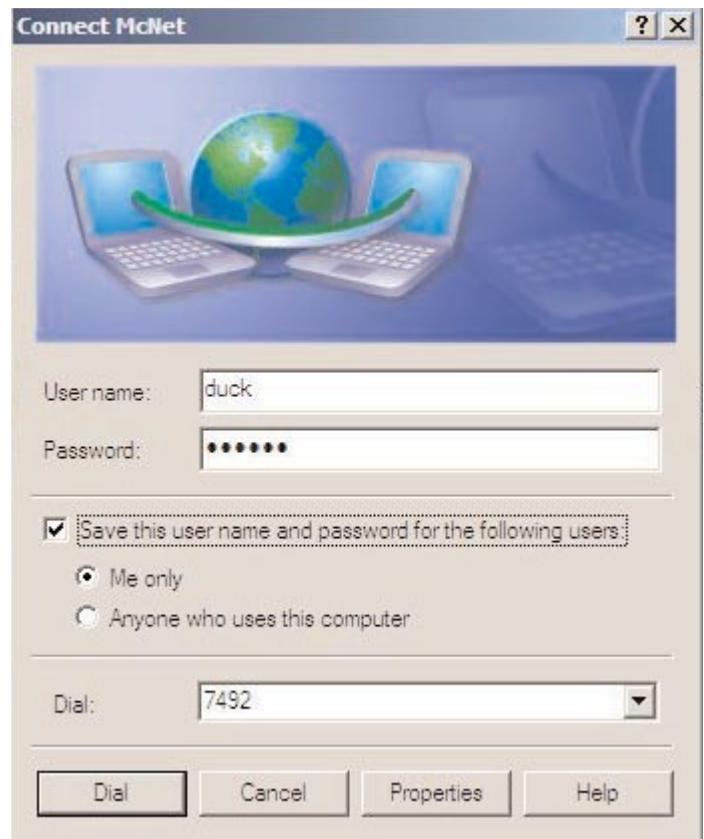
To create the connection and close this wizard, click Finish.

< Back Finish Cancel

Once you have clicked finish, the Connect McNet window should appear.

From here enter your **user name**, and then your **password**. If you choose to you can have your password saved.

Next click the **properties** button

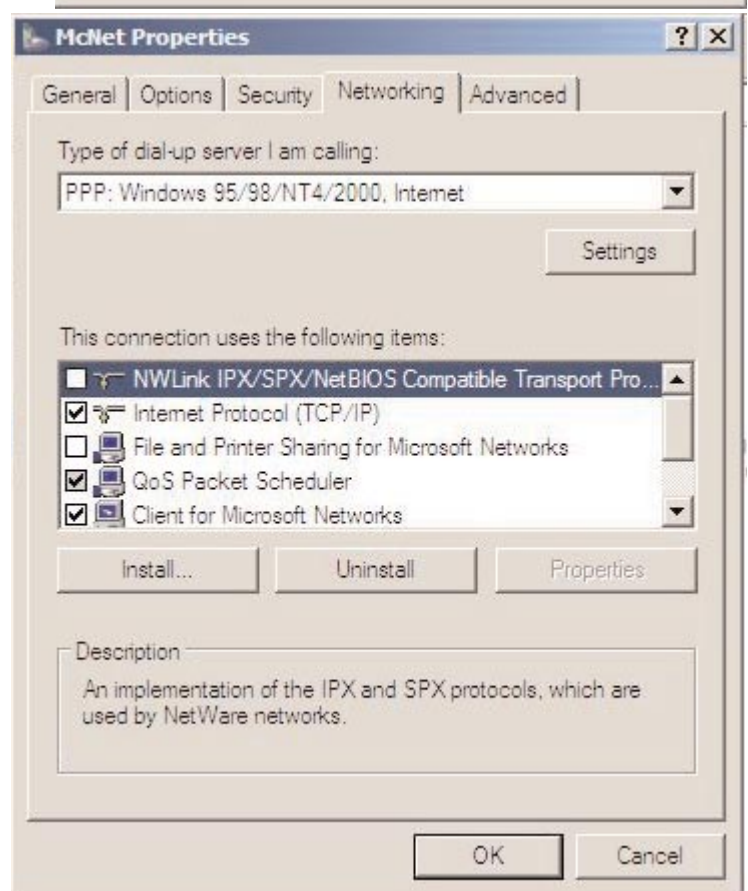


Finally, click on the **Networking tab**. The **only items** you will need to connect are:

Internet Protocol (TCP/IP)
QoS Packet Scheduler
Client for Microsoft Networks

All other items should be unchecked.

Finally click **OK**, and **Dial**.



If you restart and find that you are unable to connect to the internet, please contact the student help desk x4479 or Jonathan Duck x4860