

Printing Histology Images Using the Sony UP-D2500 Printer

By Dr. Steve Spilatro

(Edited by Dr. Dave McShaffrey, who introduced all the errors)

The Sony UP-D2500 uses a laser to transfer color from transparent sheets of red, blue and yellow plastic. Compared to a deskjet printer, such as the HP Photosmart, the UP-2500 produces a smaller, but sharper image.

Preparing to print

Sizing the image

In PhotoShop, under the Image menu, select the 'image size' option

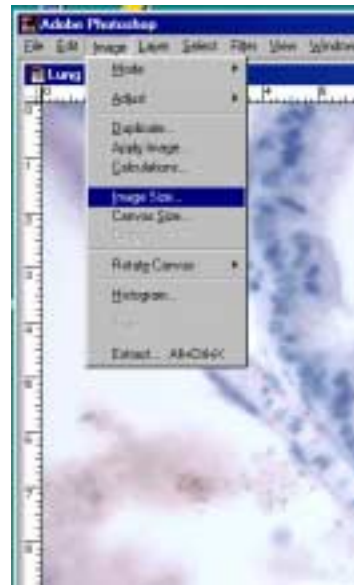
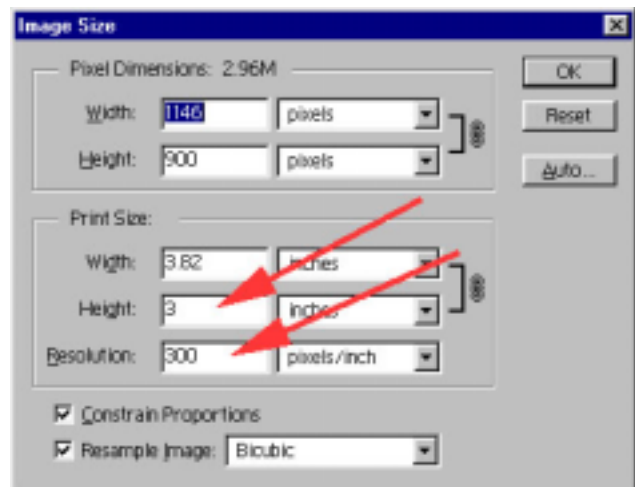


Image Size Window

Set the image height to 3 inches wide, the width should automatically change to about 3.8 inches

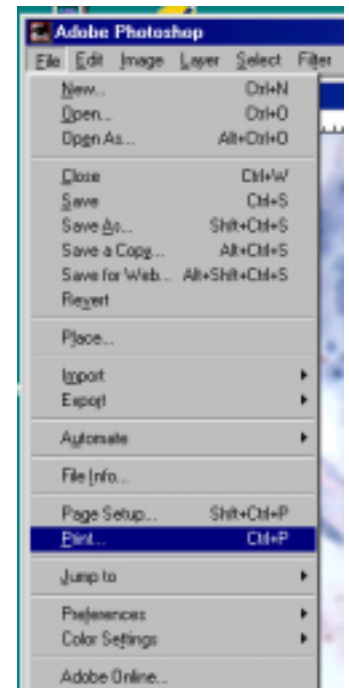
Set the resolution at 300 dpi.



Setting up the printer

Under the File menu select 'print'
(error message about image size
may appear -- ignore it)

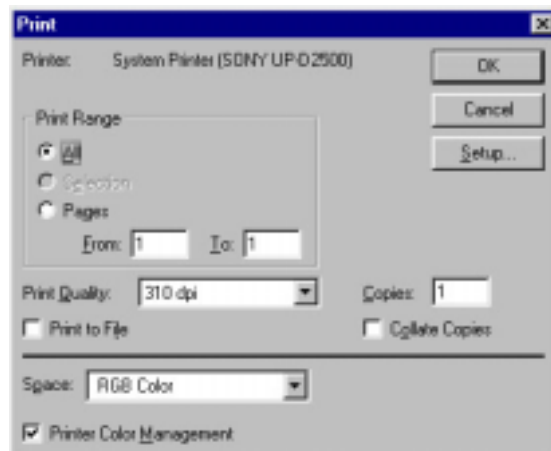
**Do not change any settings other than those you are directed to
in these directions!**



Printer Options Window

The Print Options window should
appear as shown here.

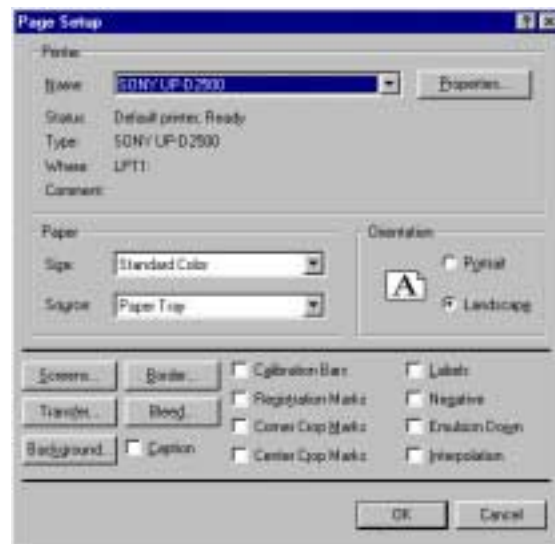
Click on 'Setup'



Printer Setup Window

The printer setup window should
appear as shown here.

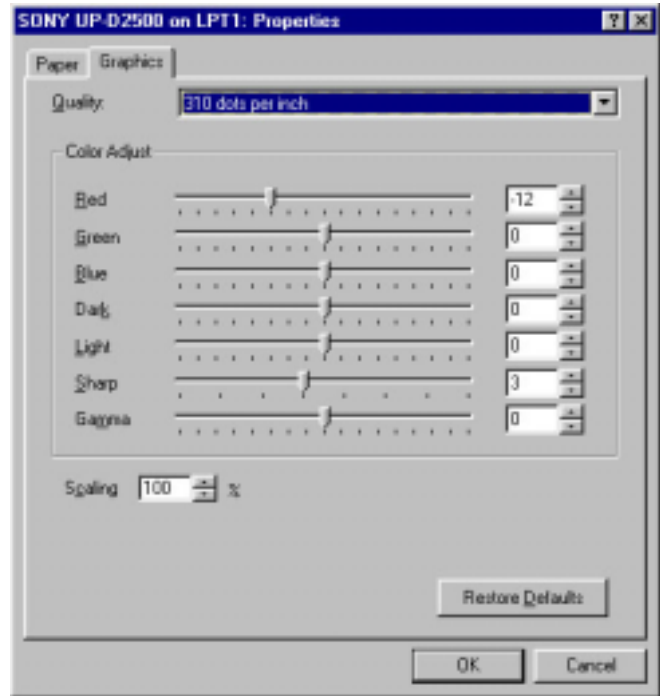
Note that orientation should be
"Landscape"



Click on the 'Properties' button.

Printer Properties Window

Click on the 'Graphics' tab and then click on "Restore defaults"



Printing

Click on 'OK' in this window and then 'OK' in the other windows shown above and printing should begin.

What to do if the printed image appears too light or dark

If, after printing an image, the color appear much lighter or darker than what you see in the Photoshop window, printing darkness can be adjusted using the 'Dark' slider control in the printer Properties Window shown above

Try adjusting the dark slider control to a value of $+ / - 20$ -- in the positive direction for a darker image. Obviously, the best value depends upon the image itself, but the overall change is not too dramatic.

Do not change any of the other adjustments in this window.

Changing these settings will affect all images subsequently printed, so be sure to restore the default values before printing another image.